

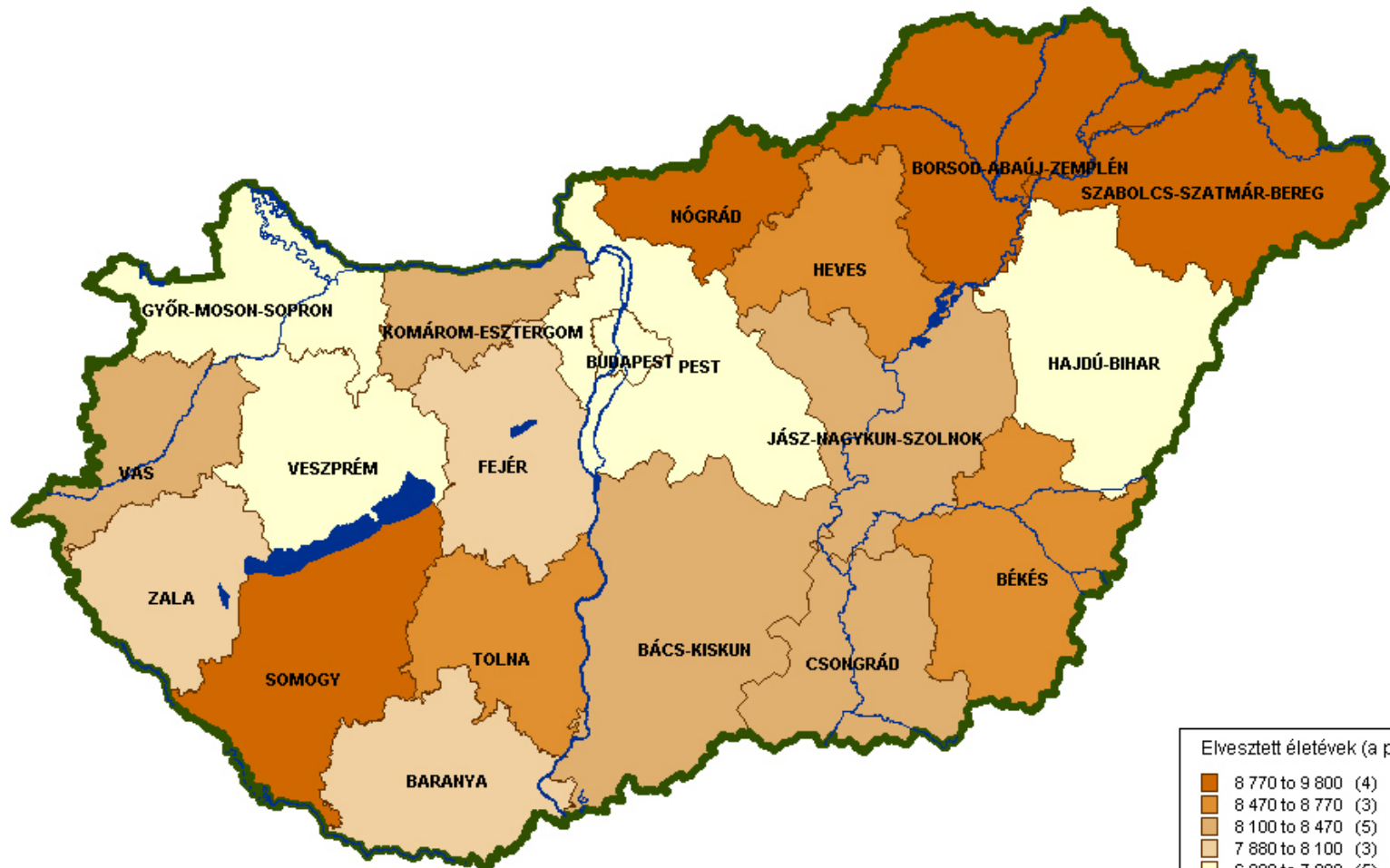
The Hungarian Health Care Reform

Presentation on the Hungarian National Health Strategy
Budapest, 18 January 2007

Zsombor Kovacszy JD, MD, MSc
Secretary of State, Ministry of Health

Source of diagrams: Gyula Kincses, NISHR

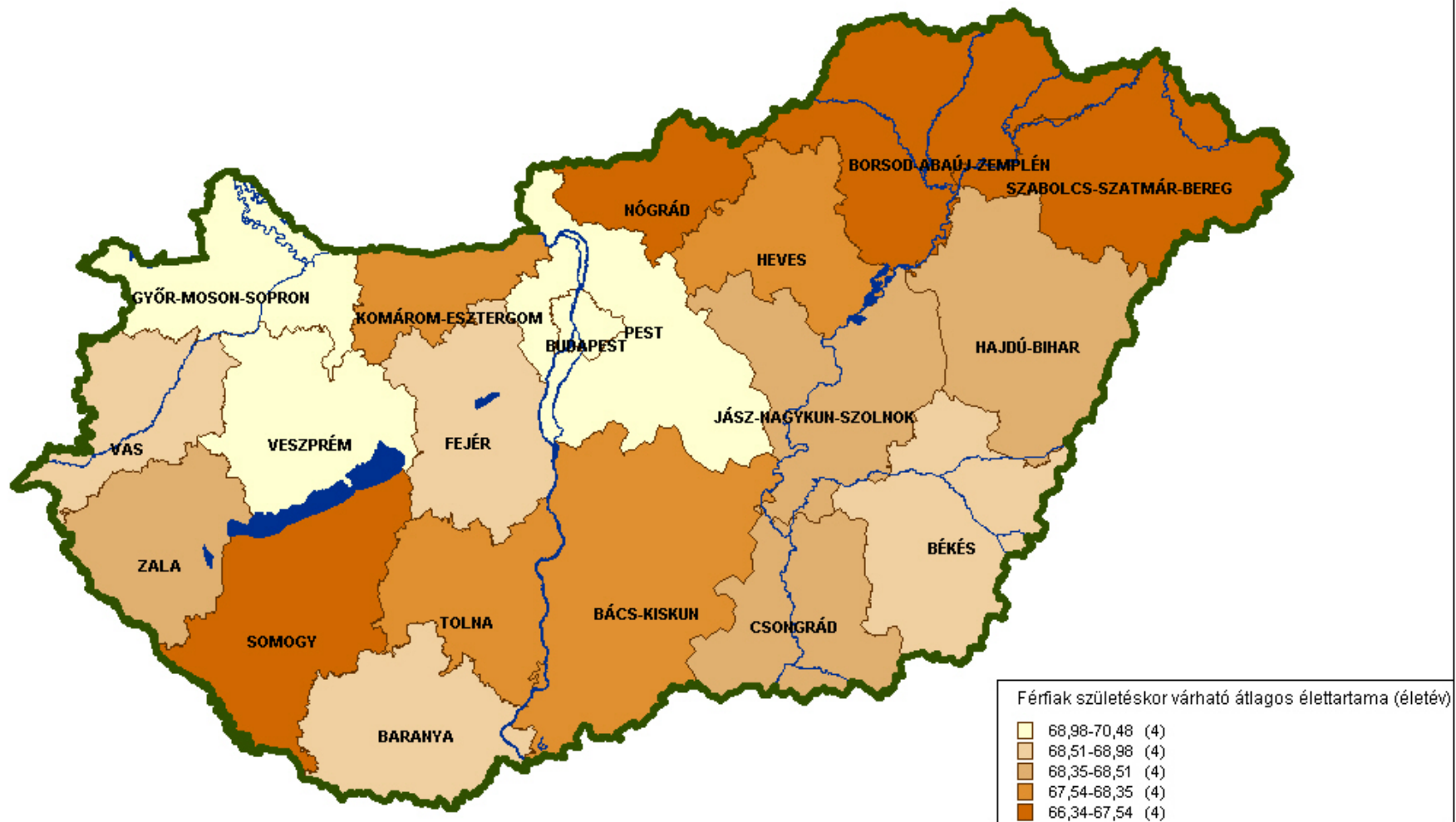
Years of life lost (70-), 2004



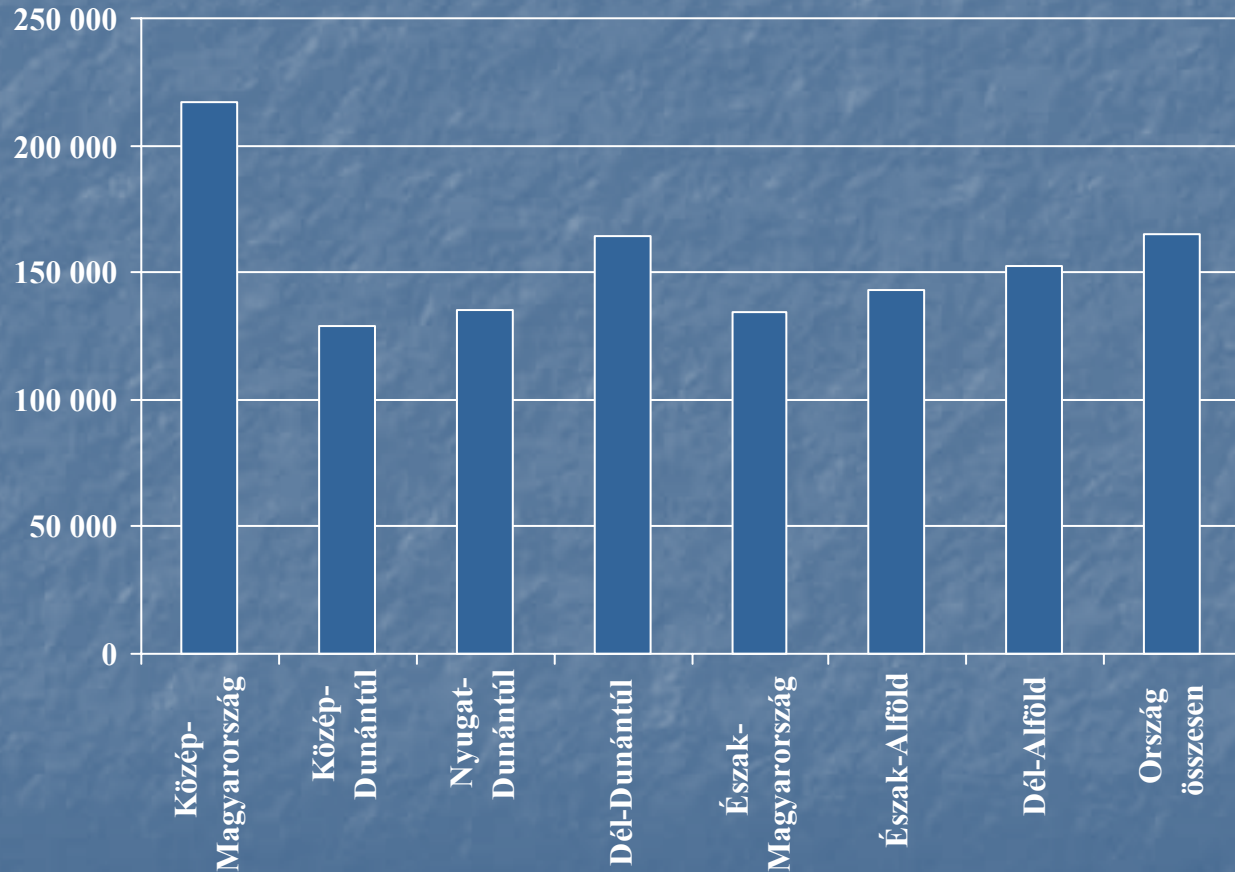
Elvesztett életek (a potenciális 70 évből)

8 770 to 9 800	(4)
8 470 to 8 770	(3)
8 100 to 8 470	(5)
7 880 to 8 100	(3)
6 990 to 7 880	(5)

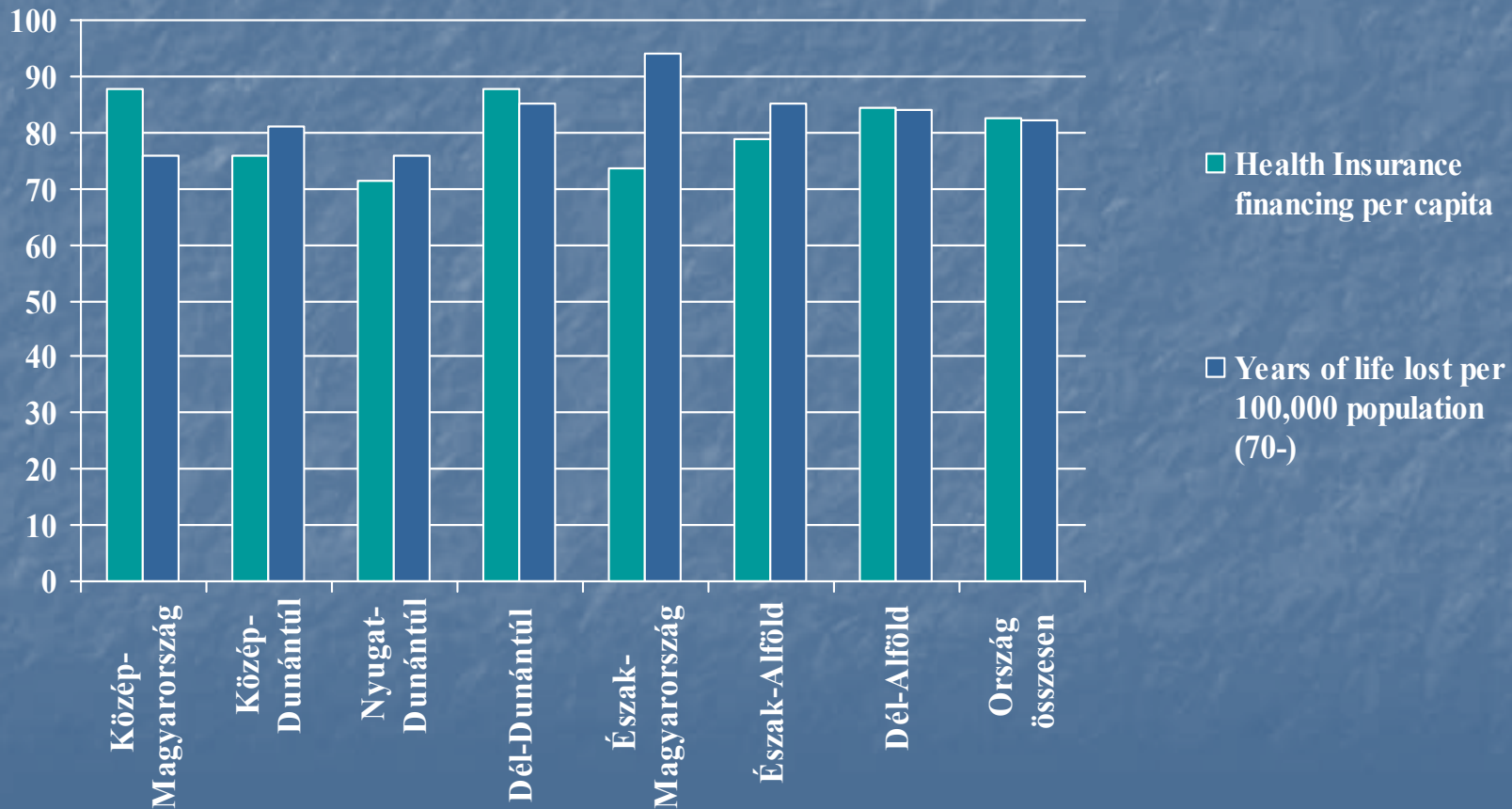
Life expectancy, males, 2004



Outpatient working hours / 100,000 population, 2004



Health insurance benefits related to years of life lost, 2004



Why?

- Catastrophic morbidity and mortality data
- Structural imbalances
- Conflicts between macro intentions and micro interests
- Lack of financial and professional transparency
- Changing needs

What?

- Public health priorities
- Regulation and enforcement of health insurance entitlement
- Consideration of the future health insurance model
- The health care system's
 - structure
 - functioning

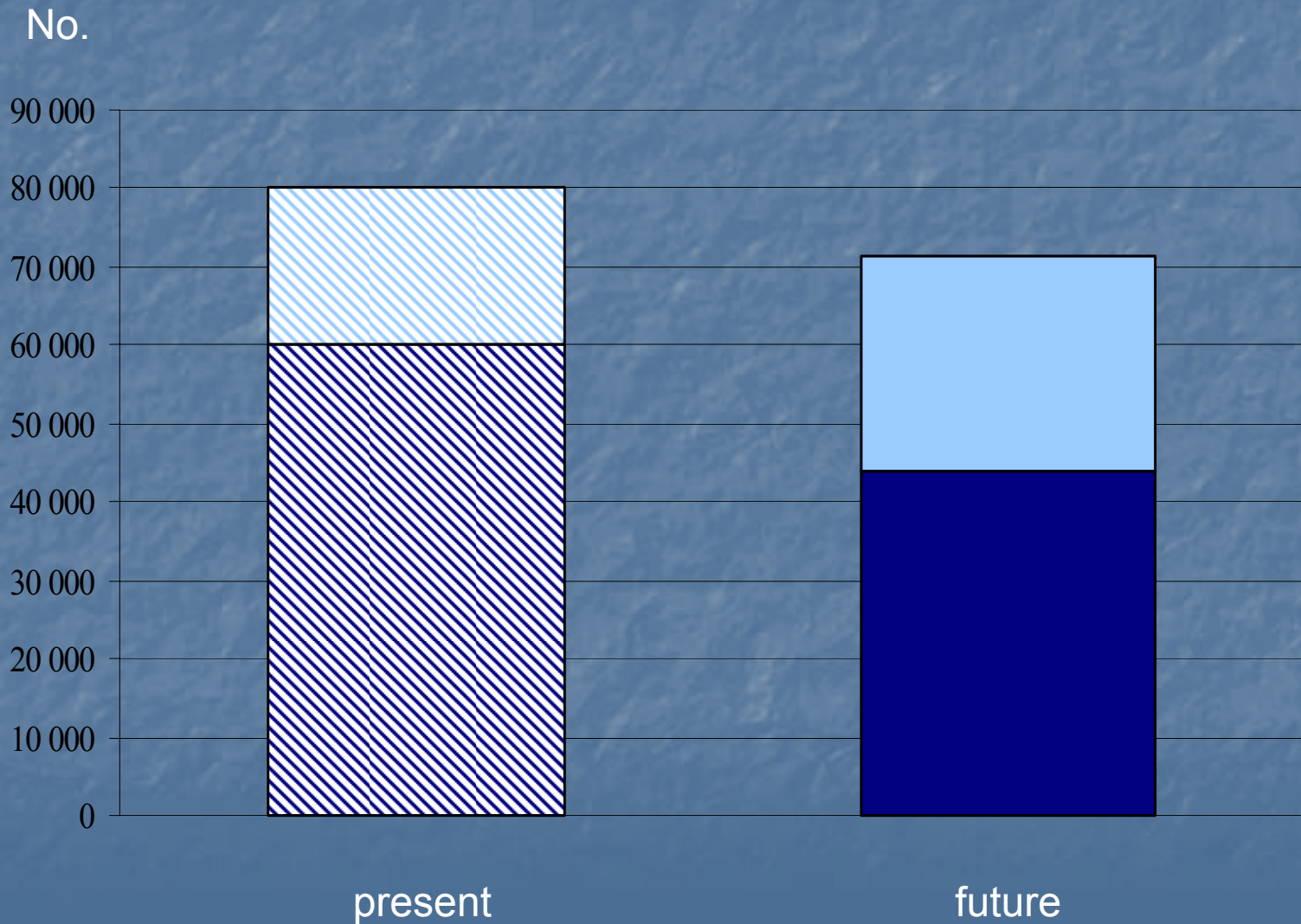
How?

- Concentration of resources
- Elimination of structural imbalances
- Enforcement of cost-effectiveness principle
- Harmonization of actions
- Strengthening the role of the individual
- Involvement of the private sphere

Major changes

- Network restructuring
- Public health focus
- Supervisory Authority
- Long-term care integration
- Co-payments

Hospital beds in Hungary

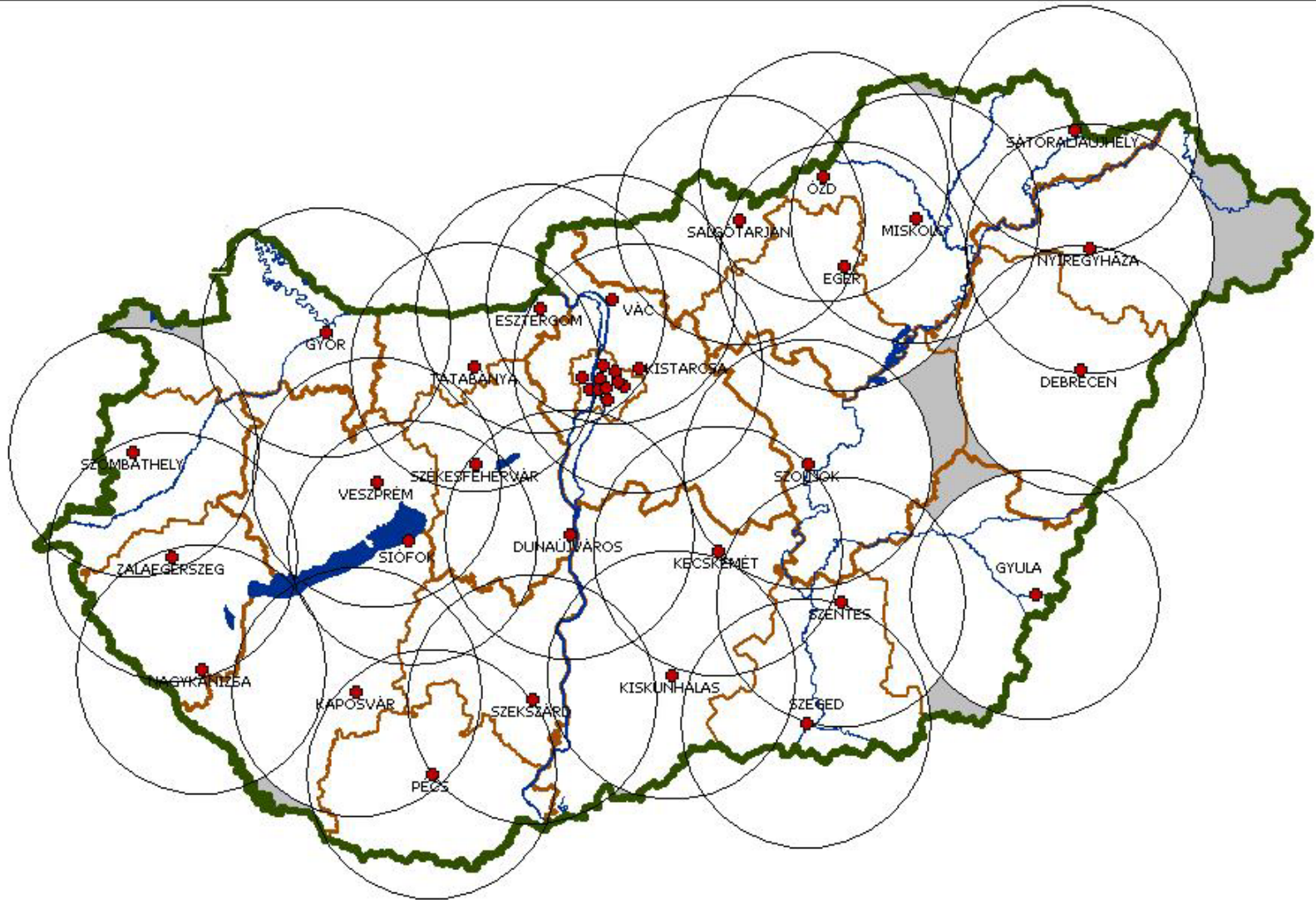


Geographic accessibility

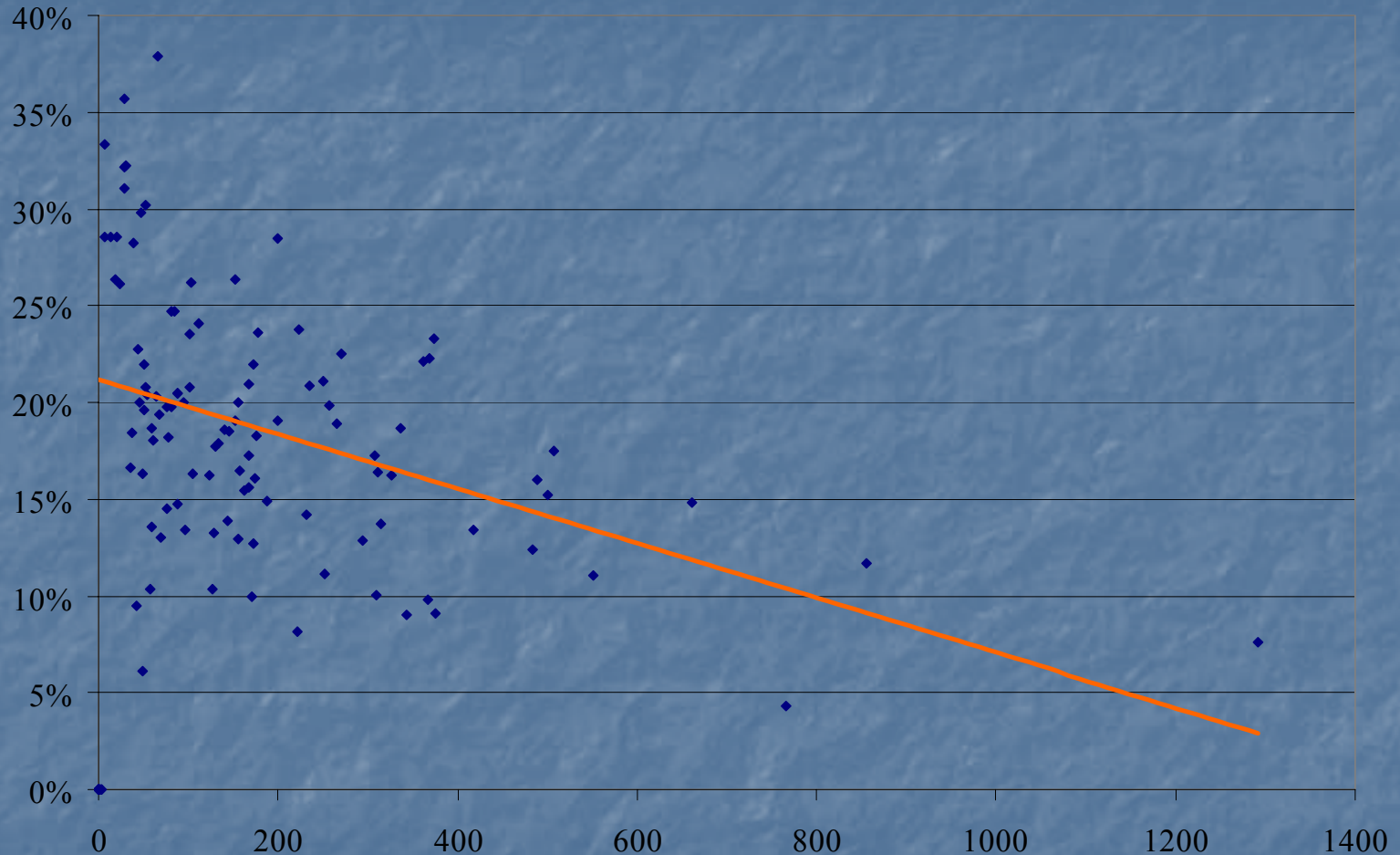
Principles (maximum distances):

- Hospital centres: 50 km
- General hospitals: 30 km
- Out-patient clinics: 20 km
- Ambulance: 15 km

Hospital centres (draft version, Nov 2006; grey areas almost totally eliminated afterwards)



Mortality rate after *infarctus myocardii* within 30 days related to the No. of cases in several hospitals



	No. of cases		
	<i>0-99</i>	<i>200-299</i>	<i>300-</i>
Mortality rate	23,8%	18,0%	14,2%

Equal and sustainable care provision

- Definition of health care packages
 - Professional and financing protocols
- Support of handicapped regions
 - Pharmacies
 - Transformation of medical training funding system
- Re-organization of long-term care
 - Clarification of social and health responsibilities
 - Sustainable package
- Integrated service centres
- Improvement of emergency care

How to harmonize convergency with equal health?

- Transformation of oversized hospital network
- Reduction of pharmaceutical costs
- Strong monitoring of care provision
- Centralization of hi-tech facilities – public health challenges
- Fine-tuning of financing methods