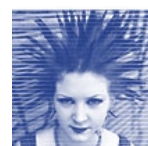




Czech Republic 2005

Field social work programmes in neighbourhoods threatened by social exclusion



Agenda

Peer Review Meeting
Prague
19-20 May 2005

on behalf of

 European Commission
DG Employment, Social Affairs and Equal Opportunities





Programme ¹

Wednesday, 18 May 2005

Arrival of participants in Prague.

All participants will be requested to arrive before 7pm at the hotel.

Hotel: Best Western Kampa
Vehrdova 16, Prague 1

20.00 **Welcome buffet** in the hotel hosted by the
Ministry of Labour and Social Affairs

- *Welcome by Mr Hocek, Deputy of the Minister of Labour and Social Affairs*
- Introduction of the participants and brief presentation of the programme for the peer review and the site visits
- Formation of groups for the site visits

¹ The meeting will be held in English and Czech with simultaneous interpretation. For the site visits consecutive translation is foreseen.



Thursday, 19 May 2005

Meeting venue: **Hrzánska Palác**
Loretánská 9, Prague 1

Chair: Mr Czeslaw Walek, Head of the Office of the Governmental Council for Roma Community Affairs

09.00 **Welcome address**
Mr Martin Zarksky, Head of the Department of Social Services of the Ministry of Labour and Social Affairs

09.15 **Peer Reviews in the field of Social Inclusion Policies:**
Mr Hugues Feltesse, DG Employment, Social Affairs and Equal Opportunities, European Commission

09.30 **Introduction to the Field Social Work Programme**
Ms Ivana Simikova, national expert

First round of comments by peer country participants: key elements of comment papers concerning policies and measures debated in the peer countries

10.45 **Coffee break**

11.00 **Mr Stepán Moravec, NGO People in Need**

Introduction to the sites to be visited and key questions for the groups to consider during their visits

12.00 **Lunch**

The group visiting Usti nad Labem will receive packed lunches and will leave directly for Usti nad Labem. The other groups will have lunch at the hotel first and depart directly afterwards.



13.30 Site visits

Site visits will take place in three groups visiting one of the following sites:

- Usti nad Labem (capital of Northern Bohemia): discussion with People in Need staff and 'sightseeing' in one group in two socially excluded Roma neighbourhoods
- Kladno (a city with one of the largest Roma populations in central Bohemia): discussion with People in Need staff and 'sightseeing' in two small groups of two socially excluded Roma neighbourhoods
- Prague: discussion with People in Need staff and 'sightseeing' in two small groups of two Roma neighbourhoods

All visits will include a guided walk through the neighbourhood, a visit to the local office of the field social work, meeting and discussion with social worker(s), local government and, if possible, community/client representatives.

16.30/ Return from site visits

17.30

19.00 Dinner hosted by the Ministry of Labour and Social Affairs

U Sedmi uvábu Jánskyvrsek 14, Prague 1 – Mala Strana

Friday, 20 May 2005

Chair: Mr Czeslaw Walek, Head of the Office of the Governmental Council for Roma Community Affairs

08.45 Feedback from site visits

- What struck participants most during the site visit?
- What aspects are most important to remember?
- Do similar situations/problems/policies exist in the participating countries?



09.15 Mr Douhomir Minev, thematic expert

Presentation of the discussion paper, the European context of the good practice under review, focusing on evaluation results and comparative aspects, and synthesis of the main questions and key issues for debate

First round of comments by peer country and stakeholder participants

Discussion

10.30 Coffee break

11.00 Working group sessions on key issues

Three working groups will work on specific questions and key issues arising from the discussion and the comment papers

12.00 Feed back from working groups

General assessment of the model and recommendations

12.30 Lunch break

Chair: Thea Meinema, peer review manager

13.00 Relevance for and key learning elements for peer countries and stakeholders representatives

Conclusions on general assessment and key lessons learned

Discussion

14.30 Résumé and closure

From the European perspective: *Mr Hugues Feltesse*, European Commission
From the national perspective: *Ms Zuzana Zajarosová*, National action plan on social inclusion coordinator, Ministry of Labour and Social Affairs

15.00 End of meeting